

HOB0 2

Mozart

AVE VERUM CORPUS, KV 618

EXSULTATE, JUBILATE, KV 165

Deel 1: Allegro

SYMPHONY NO. 25 IN G MINEUR, KV. 183

Deel 1: Allegro con brio

VESPERAE SOLENNES DE CONFESSORE

IN C MAJOR, KV. 339

Deel 5: Laudate Dominum

(PSALM 117)

KRÖNUNGSMESSE, KV 317

1 Kyrie: Andante maestoso

Più andante

2 Gloria: Allegretto con spirito

3 Credo: Allegro molto

Adagio - Tempo I

4 Sanctus: Andante maestoso

Allegro assai

5 Benedictus: Allegretto

Allegro assai

6 Agnus Dei: Andante sostenuto

AVE VERUM CORPUS, KV 618
TACET

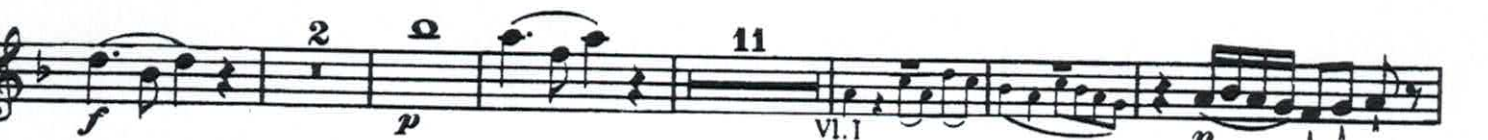
AND WITHOUT PREJUDICE TO THE
RIGHTS OF THE PARTIES

Motette: Exsultate, jubilate.

OBOE II

W. A. Mozart. Werk 165.

Allegro



cresc.

f

Recitativo 12

Andante 65 38 4 VI.I

Allegro *f*

12 VI.I 3

3 1 5 1 16 VI.I *p*

6 9 VI.I *cresc.* *f*

6 *p*

15 Sopran
al - le - lu - ja, al - le - lu - ja. *f*

4

f

Wolfgang Amadeus Mozart
Symphony No. 25

OBOE II

Allegro con brio

The musical score for Oboe II in Mozart's Symphony No. 25, measures 1 through 135. The piece is in G minor and 3/4 time, marked 'Allegro con brio'. The score begins with a dynamic of *f* (forte). It features several first endings (marked '1') and a second ending (marked '2'). A section labeled 'A' begins at measure 11, and a section labeled 'B' begins at measure 50. A section labeled 'C' begins at measure 102. The score includes various musical notations such as slurs, accents, and dynamic markings like *f*, *p*, and *mf*. The piece concludes with a double bar line and a repeat sign at measure 135.

Mozart — Symphony No. 25 in G Minor

2

OBOE II

Musical score for Oboe II, measures 145-201. The score is in G minor (two flats) and 4/4 time. It begins with a dynamic marking of *f* (forte). The music features several measures with first fingerings (1) and a section starting at measure 172 with a dynamic marking of *f*. The piece concludes with a Coda section starting at measure 201.

Musical score for Violin I, measures 14-54. The tempo is marked *Andante*. The score is in G minor and 2/4 time. It includes sections labeled A (measures 14-11) and B (measures 9-3). Dynamic markings include *p* (piano) and *f* (forte).

Musical score for Minuetto, measures 13-51. The tempo is *Andante*. The score is in G minor and 3/4 time. It includes a section labeled Trio starting at measure 30. Dynamic markings include *f* (forte) and *fp* (fortissimo piano). The piece concludes with a trill (*tr*) and the instruction *Minuetto d. c.* (ritardando).

Laudate Dominum

(1756- 1791)

Oboe 2

aus "Vesperae solennes de Confessore" KV 339 Nr. 5

w. A. Mozart

41

45 *f* *p*

50

57 *p* *f* *f* *>*

64 *p* *tr* *pp*

The image shows a musical score for Oboe 2, measures 41 through 64. The score is written in treble clef with a key signature of one flat (B-flat) and a time signature of 6/8. Measure 41 is a whole rest. Measure 42 begins with a melodic line. Measure 45 has a forte (*f*) dynamic, followed by a piano (*p*) dynamic. Measure 50 continues the melodic line. Measure 57 has a piano (*p*) dynamic, followed by a forte (*f*) dynamic, and a fortissimo (*f*) dynamic. Measure 64 has a piano (*p*) dynamic, a trill (*tr*), and a pianissimo (*pp*) dynamic. The score ends with a double bar line.

W.A. Mozart Mass in C Major

Oboe II.

Kyrie.

Andante maestoso.

fp < fp < fp < f *p* *mf p*

Più andante. (Più vivo.) *Ob. I.* *1* *solo dolce*

mf p mf p *1*

Andante maestoso. *f* *fp < fp < f*

1 *solo dolce*

Gloria.

Allegro con spirito.

f *3* *3*

13 *A* *p*

22 *f* *1*

30 *B* *p* *2* *2*

41 *f* *1* *C*

49 *2*

Oboe II.

Musical score for Oboe II, measures 59-170. The score is written in treble clef and includes various dynamics, articulations, and fingerings.

Measures 59-64: *p* (piano). Measure 65: *p* (piano), trill (*tr*). Measure 71: trill (*tr*). Measure 77: **D** (D major), *f* (forte), *p* (piano). Measure 87: Fingerings 1, 2, 3, 4, 5, 2; **E** (E major), *f* (forte). Measure 100: *p* (piano), *f* (forte). Measure 112: *p* (piano), *f* (forte), **F** (F major). Measure 121: trill (*tr*), *p* (piano), **G** (G major), 3 (triple). Measure 140: *p* (piano), *f* (forte). Measure 149: **H** (H major), *p* (piano). Measure 160: *f* (forte), 1 (first ending). Measure 170: **I** (I major), *p* (piano), 2 (second ending), 1 (first ending).

Oboe II.

179 

189 

Credo.

Allegro molto.



6 

11 

18 

26 

33 

38 

44 

50 

55 

Oboe II.

61 *p* *cresc.* *f* *O*

67 *p* *f* *pp* *P*

72 *f* *Tempo I.*

77

84 *fp* *fp* *fp* *fp* *f* *Q*

91 *f* *p* *f* *p* *R* *2*

99 *p* *f* *p* *f* *p* *tr.* *3*

108 *f* *1* *S*

118 *fp* *fp* *T*

125 *fn* *f* *2*

134 *U*

139 *V*

146 *b_e*

Detailed description: This page of a musical score for Oboe II from Mozart's Mass in C Major, K. 317, "Coronation Mass" contains measures 61 through 146. The score is written in treble clef with a key signature of one flat (B-flat). It features various dynamics including piano (*p*), fortissimo (*f*), pianissimo (*pp*), fortissimo-piano (*fp*), and fortissimo-naturale (*fn*). Performance markings include accents, trills (*tr.*), and articulation marks labeled O, P, Q, R, S, T, U, and V. Measure numbers are placed at the beginning of each staff line. The tempo changes to "Tempo I." at measure 72. The score concludes with a B-flat key signature change at measure 146.

Oboe II.

Sanctus.

Andante maestoso.

7 *f* *tr* *tr* *Aa* *attacca*

Allegro assai.

15 *Bb* *tr* *tr* *41*

Benedictus.

Allegretto.

Viol. I. *7* Viol. I. *Cc* *dolce* *fp* *p* *pp* *cresc.* *Dd* *dolce* *fp* *fp* *fp* *fp* *Ee* *fp* *3*

Oboe II.

60 **Allegro assai.** **Ff**

72 **Allegretto.** *p dolce*

81 **Allegro assai.** *f* *tr.*

90

Agnus Dei.

Andante sostenuto. *dolce* 1 2 12

22 **Sopran** *dolce* **Gg 11**

41 *dolce* **Hh 1** **Viol. I.** *p* 3

53 **Andante con moto.** *fp* *f* *p cresc.* 8 **Ii 1** **Ob. I.**

70 **Allegro con spirito.** *f* *tr.*

78 **Kk** *p* *f*

86 *tr.* *p* **Ll** *f*

94 *tr.* *p* **Mm** *f* *tr.* *p*

100 *f* *tr.* *p*