

Vipool 2

Mozart

AVE VERUM CORPUS, KV 618

EXSULTATE, JUBILATE, KV 165

Deel 1: Allegro

SYMPHONY NO. 25 IN G MINEUR, KV. 183

Deel 1: Allegro con brio

VESPERAE SOLEMNES DE CONFESSORE

IN C MAJOR, KV. 339

Deel 5: Laudate Dominum
(PSALM 117)

KRÖNUNGSMESSE, KV 317

1 Kyrie: Andante maestoso

Più andante

2 Gloria: Allegretto con spirito

3 Credo: Allegro molto

Adagio - Tempo I

4 Sanctus: Andante maestoso

Allegro assai

5 Benedictus: Allegretto

Allegro assai

6 Agnus Dei: Andante sostenuto

AVE VERUM CORPUS

K.618

W.A. MOZART

Violon 2

Adagio

sotto voce

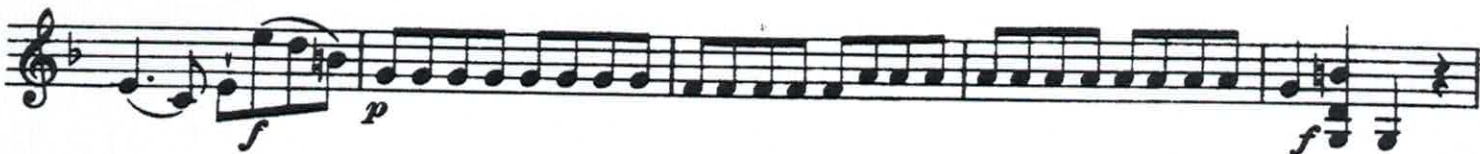
The musical score for Violon 2 is written in G major (one sharp) and 3/4 time. The tempo is Adagio and the dynamics are *sotto voce*. The score consists of seven staves of music, starting at measure 1 and ending at measure 40. The first staff begins with a treble clef, a key signature of one sharp (F#), and a common time signature (C). The music is characterized by a slow, lyrical melody with frequent slurs and ties. The second staff starts at measure 7, the third at measure 14, the fourth at measure 21, the fifth at measure 28, the sixth at measure 34, and the seventh at measure 40. The piece concludes with a final double bar line at the end of the seventh staff.

Motette: Exsultate, jubilate.

VIOLINO II

W. A. Mozart. Werk 165.

Allegro



This page of musical notation consists of 12 staves. The key signature is one flat (B-flat), and the time signature is 4/4. The notation includes various rhythmic patterns, dynamics, and articulation marks.

Staff 1: *cresc.* *f*

Staff 2: *p*

Staff 3: *f*

Staff 4: *p*

Staff 5: *f* *p*

Staff 6: *f* *p* *f* *p*

Staff 7: *f* *p*

Staff 8: *f* *p*

Staff 9: *f* *p*

Staff 10: *cresc.* *f*

Staff 11: *f* *p*

Staff 12: *f* *p*

Wolfgang Amadeus Mozart
Symphony No. 25

VIOLINO II

Allegro con brio

The musical score for Violino II of Mozart's Symphony No. 25 is presented in a single system with ten staves. The key signature is B-flat major (two flats) and the time signature is common time (C). The tempo is marked "Allegro con brio".

The score begins with a dynamic marking of *f* (forte) on the first staff. The first two staves contain a melodic line with slurs and accents. The third staff continues the melodic line, ending with a dynamic marking of *p* (piano) and *dim.* (diminuendo). The fourth staff features a rhythmic accompaniment of eighth notes.

The fifth staff is marked with *pp* (pianissimo) and contains a section labeled "A". The sixth staff continues the accompaniment, marked with a first ending bracket "1". The seventh staff continues the melodic line. The eighth staff continues the accompaniment, marked with *f* (forte). The ninth staff is marked with "B" and contains a melodic line starting with a dynamic marking of *p* (piano). The tenth staff continues the melodic line.

VIOLINO II

This musical score for Violino II consists of 13 staves of music, numbered 3 through 55. The key signature is G minor (two flats). The score includes various musical notations such as dynamics (pp, p, f, decresc.), articulation (accents, slurs), and performance instructions (1, C, D, E). Measure numbers 3, 4, 17, 21, 25, 29, 36, 43, 53, 31, 38, and 5 are placed at the beginning of their respective staves. The music features complex rhythmic patterns, including sixteenth-note runs and chords.

VIOLINO II

2 *f*

17

1

15

11 **Coda**

37

12

Andante
con sordino
p

4 1 **A**

8

1

3

1

Violino II

Laudate Dominum

aus "Vesperae solennes de Confessore" KV 339 Nr. 5

W. A. Mozart
(1756 - 1791)

Andante ma un poco sostenuto
a mezza voce

4

7 a mezza voce

10 *f*

13 *calando* *p*

16 *mf*

19 *p*

22

25 *f*

29 *p* *mf*

33 *p* *f*

Violino II

37 *mf*

41 *p* Tutti

44 *f*

47 *p*

50

53 *f* *p*

56 *f*

59 *p* *f*

63 *p*

66

69 *pp*

W.A. Mozart
Mass in C Major

Violino II.

Kyrie.

Andante maestoso.

Measures 1-6. Dynamics: *f*, *p*, *f*, *p*, *f*, *p*, *p*, *mf*, *p*.

Più andante. (Più vivo.)

Measures 7-18. Dynamics: *mf*, *p*, *mf*, *p*, *p*.

Andante maestoso.

Measures 19-28. Dynamics: *f*, *p*, *f*, *p*, *p*, *f*, *p*, *p*.

Violino II.

Gloria.

Allegro con spirito.

1

2

6

11

15 A

24

29 B

32

37

42

45 C

48

f *p* *f* *p* *f* *p* *f*

1 2 3 4 V

Violino II.

51

56 *p*

68 *tr* *tr* *tr*

73 *tr* *tr* *tr* **D** *f*

78

82

86 *p*

91 **E** *f*

96

100

Detailed description: This page of a musical score for Violino II contains ten staves of music, numbered 51 to 100. The music is written in treble clef with a key signature of one sharp (F#). The score includes various musical notations such as slurs, trills (tr), and dynamic markings. Measure 56 is marked with a piano (*p*) dynamic. Measures 68, 73, and 86 feature trills. Measure 73 includes a forte (*f*) dynamic and a fermata over a D note. Measure 91 includes a fermata over an E note. The score concludes with a final cadence in measure 100.

Mozart — Mass in C Major, K. 317, "Coronation Mass"

4

Violino II.

105 *p*

110 *f*

115

119 **F** 3

123 *p*

128 *f*

133 **G** *p*

137 2 *f* *p*

142 *f*

146 *f*

Violino II.

149 **H**

158 *p*

162 *f*

165

168

171 **I** *p*

177 *f*

182

185

190

195

Detailed description: This page of a musical score for Violino II contains ten staves of music, numbered 149 to 195. The music is in 4/4 time and C major. It begins with a half rest (H) at measure 149. The score features various rhythmic patterns, including eighth and sixteenth notes, and rests. Dynamics include piano (p) and forte (f). There are several trills and triplets (marked with a '3') throughout the piece. The key signature changes to one flat (F major) at measure 190. The page is numbered 5 in the top right corner.

Violino II.

Credo.

Allegro molto.

1

4

7

10

13

16

19

23

26

29

32

35

f

fp

fp

fp

fp

f

K

L

b

Violino II.

38

41

44

47

50

53

56

Adagio.

59 *con sord.*

63 *sempre f*

66

68

70 *cresc.* *senza sord.*

Violino II.

Tempo I.

Musical score for Violino II, measures 72-123. The score is written on a single staff with a treble clef. It begins with a dynamic marking of *f* and a tempo marking of **Tempo I.** The music is in 4/4 time. The key signature is C major. The score includes various musical notations such as slurs, ties, and ornaments. Performance instructions include dynamics like *f*, *fp*, *f*, *p*, *cresc.*, and *fp* *decresc.* *fp*. Specific markings include **R** (ritardando) at measure 96, **S** (sforzando) at measure 113, and **T** (trillo) at measure 120. Measure numbers 72, 76, 80, 84, 88, 92, 96, 103, 108, 113, 116, 120, and 123 are indicated at the start of their respective lines. The score concludes with a final *fp* dynamic marking.

Violino II.

Musical score for Violino II, measures 128-149. The score is written in treble clef with a key signature of one sharp (F#). It features a complex rhythmic pattern of eighth and sixteenth notes, often beamed together. Measure 128 starts with a forte (*f*) dynamic. Measures 131, 134, 137, 140, 143, 146, and 149 contain various musical markings including fingerings (1, 2, 3, 4), slurs, and a *V* (Vibrato) marking above measure 140. Measure 134 has a *U* marking above the staff, and measure 146 has a *b_i* marking above the staff.

Sanctus.

Andante maestoso.

Musical score for the Sanctus, measures 1-15. The score is written in treble clef with a key signature of one sharp (F#) and a 3/4 time signature. It begins with a forte (*f*) dynamic and a *V* (Vibrato) marking above measure 1. Measures 1-15 contain various musical markings including trills (*tr*), slurs, and fingerings (1, 2). Measure 5 has a *sul G* marking above the staff. Measure 10 has a *Aa* marking above the staff. Measure 15 has a *2* marking above the staff. The score concludes with the instruction *attacca* at the end of measure 10.

Violino II.

Musical score for Violino II, measures 23-41. The score is written in treble clef with a key signature of one flat (Bb). It features several trills (tr) and slurs. Measure 28 includes a Bb trill. Measure 35 has a double bar line with a '2' above it, indicating a second ending. Measure 41 ends with a double bar line.

Benedictus.

Allegretto.

Musical score for the Benedictus, measures 1-45. The score is written in treble clef with a 2/4 time signature and a key signature of one flat (Bb). It features a continuous eighth-note pattern. Dynamics include *p*, *f*, *pp*, *cresc.*, and *fp*. Measure 32 includes a Dd trill. Measure 45 includes an Ee trill. The score ends with a double bar line.

Violino II.

53 *tr* *f* *p* *pp*

60 *Allegro assai.* *f* *tr* *2* *tr* *tr* *2* *Ff*

71 *Allegretto.* *p*

78 *Allegro assai.* *tr* *tr* *f*

85 *tr* *tr*

92

Agnus Dei.

Andante sostenuto.
con sordino.

p *tr* *3* *1*

9 *tr* *3* *1*

17 *cresc.* *f* *p*

25 *Gg* *3* *1*

31 *p*

38 *fp*

Violino II.

44 Hh pizz. arco 1

51 2 fp fp fp f

57 Andante con moto. senza sordino p

61

65 Li

69 Allegro con spirito. cresc. f

73 tr V

77 Kk p

82 tr f

86 p f tr

91 Ll

95 tr Mm tr f

102 tr p f

Detailed description: This page of a musical score for Violino II in Mozart's Mass in C Major, K. 317, contains measures 44 through 102. The score is written on a single staff in treble clef with a key signature of one flat (B-flat). It begins at measure 44 with a piano pizzicato (pizz.) section, marked 'arco' and '1'. The tempo is 'Andante con moto' and 'senza sordino'. The dynamics range from piano (p) to fortissimo (fp) and forte (f). The tempo changes to 'Allegro con spirito' at measure 69. The score includes various musical ornaments such as trills (tr) and grace notes (V). The piece concludes at measure 102 with a final trill (tr) and a fortissimo (f) dynamic.